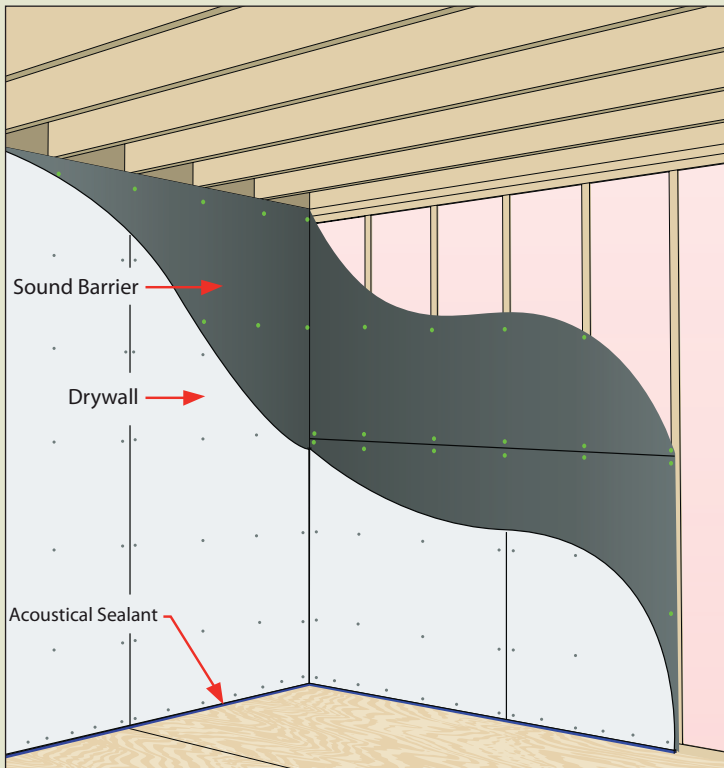


# SOUNDPROOF BARRIER

WALLS/CEILINGS/FLOORS

SOUND BARRIER IS THE NOISE CONTROL STANDARD  
FAST AND EASY INSTALLATION WITH PROVEN RESULTS  
RECOGNIZED AS AN EFFECTIVE, PROVEN PRODUCT FOR  
SOUNDPROOFING AND NOISE REDUCTION



By attaching Soundproof Barrier directly to the studs, noise energy will be absorbed and redirected, lowering the noise level in the next room.

**Soundproof Barrier is not effective between layers of drywall, plywood, or other rigid materials**

## Soundproof Barrier is the most widely used noise control solution for walls, floors and ceilings.

For a reliable, proven solution to any noise problem, you can count on Sound Isolation Company. Soundproof Barrier (Mass Loaded Vinyl or MLV) is a flexible, heavy product that comes in rolls. Simple to install, and readily available from 10 different US locations, Soundproof Barrier is an easy and effective choice for your soundproofing project.

For today's commercial, institutional and residential projects standard construction will not provide adequate privacy between spaces. It is common practice to place occupants with diverse businesses next to one another; many homes now have media rooms in the basement with living or sleeping space above; institutional spaces are combining quiet areas and loud activity areas on the same floor, or stacked on each other. In every case Soundproof Barrier can provide needed noise reduction.

- ▶ Easy to use, widely recognized and available for shipment today for 10 different US locations.
- ▶ Available in several weights and thicknesses; 48" or 54" wide to match framing of walls/ceilings.
- ▶ Used and tested in 1000's of projects; providing your project with higher STC rating.
- ▶ UL approved U300, U400, V400, L500

**Solve your noise problem. Call now to get it right the first time 888-666-5090**

With Sound Isolation Company you will get the help you need: expert design, product selection and installation instruction. We have the experience you need for a partnership that will work.

**SOUND [ISOLATION] COMPANY**

2900 WESTINGHOUSE BLVD. SUITE 106  
CHARLOTTE, NC 28273  
704 / 504 / 1127 PH  
704 / 504 / 1115 FX  
888 / 666 / 5090 TOLL FREE  
WWW.SOUNDISOLATIONCOMPANY.COM

[www.soundisolationcompany.com](http://www.soundisolationcompany.com)



**Soundproof Barrier solves all your noise control problems in one easy step.**

- ▶ Install quickly with a cap stapler (Crossfire) or button caps.
- ▶ At only 1/8" thick, low profile will not affect doors/windows.
- ▶ Ideal for installation on wood or metal framing.

**Your soundproofing choice is simple!**

**Neighbor noise, party walls, everyday levels:**

Use 1/8" thick, 1 lb/sqft Soundproof Barrier and regular 5/8" drywall; will improve wall to STC 50

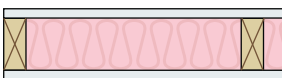
**Louder noises from music, light industrial or nuisance situations:**

Use 3/16" thick, 1.5 lb/sqft Soundproof Barrier and regular 5/8" drywall; for better results.

**Home Theater, Band Practice, Home Studio, amplified noise:**

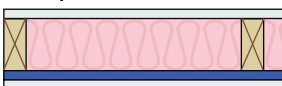
1/4" thick, 2 lb/sqft Soundproof Barrier and regular 5/8" drywall; is required in these situations.

**Standard Wall - STC: 37-39**



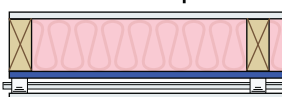
5/8" Drywall both sides  
2"x4" Wood Studs  
R-13 Insulation

**Soundproof Barrier - STC: 47-50**

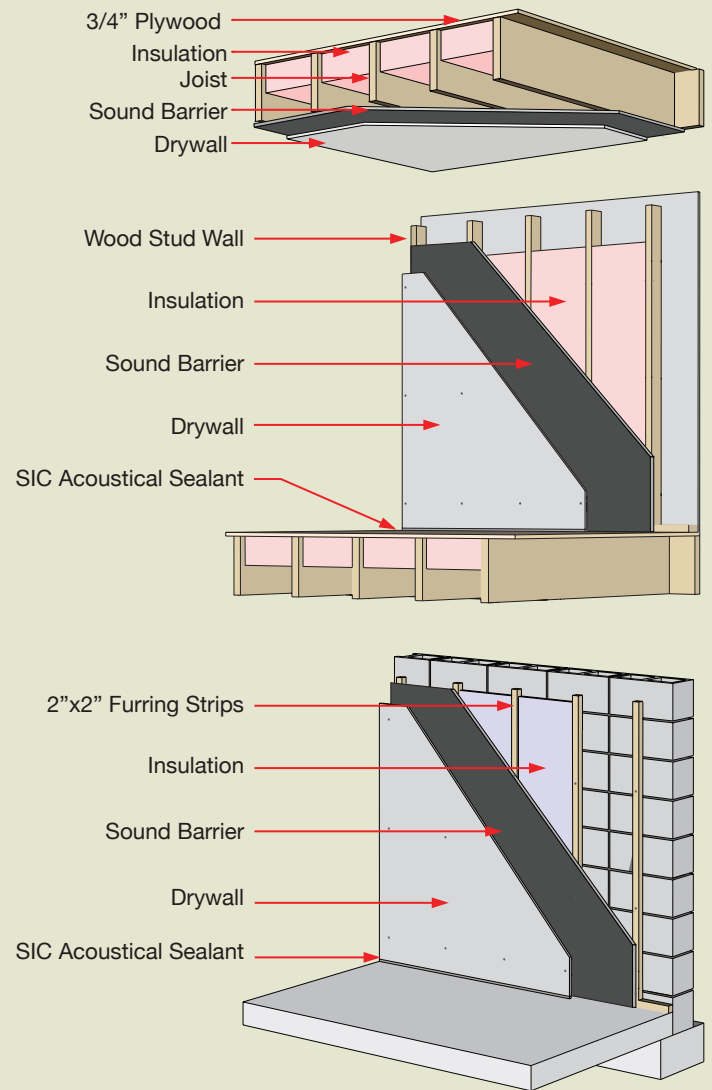


5/8" Drywall both sides  
Soundproof Barrier one side  
2"x4" Wood Studs  
R-13 Insulation

**Sound Isolation Clips - STC: 58**



5/8" Drywall both sides  
Soundproof Barrier one side  
Sound Isolation Clips one side  
2"x4" Wood Studs  
R-13 Insulation



**ROLL SIZES:**

4' x 25' and 4.5' x 30'  
Custom sizes available for large orders.

**TRANSMISSION LOSS FACTOR (SINGLE PASS)**

Density	125	250	500	1000	2000	4000	STC
0.5 lb*	8	13	17	22	27	31	20
1.0 lb	16	17	23	29	34	37	27
1.5 lb*	17	19	25	31	36	44	29
2.0 lb	19	22	27	34	38	43	32

per ASTM E-90, E 413 \* 2 week lead time

**ACCESSORIES**

- Foil or Vinyl Seam Tape (for overlaps in stud cavity)
- Silenseal Acoustical Sealant
- Crossfire Stapler
- Sound Isolation Clips (maximum results)